

This May at Windmill Park Children's Centre

At Windmill Park, families and parents can access a range of services to support health, employment and/or further education including opportunities for training. We also offer a weekly range of fun activities for children all of which are **free of charge**. We have a small car park and boast a large hall that is well utilized for all our activities!

Our Children's Centre Practitioner **Kamaljit Chagger** is on hand regularly for advice, support and guidance on a variety of topics and can refer you to relevant agencies for further help and support should you require it.

10ⁱn free TALK AND PLAY Program

"Talk and Play" is a five-week play-based group for under 3's run by Early Years Practitioners in Ealing, supported by Speech and Language Therapists. It provides families with strategies to support their child's language and communication development.

(For Booking Call us on 020 8571 0878 or 020 8574 5310)

Windmill Park Children's Centre

1 Tulip Close
Southall
Middlesex, UB2 4UZ.
Tel 020 8574 5310 or 020 8571 0878
Email cc@grovehousecc.com



Children & Families Directory

For an online directory of information, advice and guidance to help you access services in the London Borough of Ealing visit: -
<http://www.ealingfamiliesdirectory.org.uk>

Advisory Board

Children's Centres have an Advisory Board, which meets regularly to discuss the work of the Centre. They discuss for example budgets, services, data, who uses the Centre, who should be using the Centre and are the needs of the local community being met. The Board is made up of lots of different people who live and work in our community. Most importantly, we need YOU! We need parents to attend the Advisory Board so we can hear your opinions, thoughts and views about YOUR Children's Centre.

Do you need support in getting back to work?

Free job advice and planning to get back to work, support to find training, childcare and debt advice if you or a member of your family is claiming work-related benefits.

See Children's Centre staff for more information or to arrange an appointment (*To Be Confirmed*)



Windmill Park Children's Centre Timetable – May 2025

Monday



10.00am -
10.45am

Birth - 5 years

CLOSED:
05/05 & 26/05

Drop in session



Tuesday



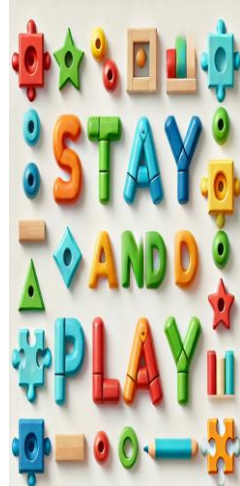
Please collect your vitamins from Windmill Park Children's Centre if you have received your Healthy Start Vouchers for Women & Children

Thursday: 8:30-11:30
Please call us to check availability.
020 8574 5310 or
020 8571 0878

To find out more about Healthy Start Vouchers visit
www.healthystart.nhs.uk



Wednesday



With

Kamaljit

9.30am – 11:30am
Birth - 5 years

CLOSED
28/05

(Term time only)
Drop in session

Thursday



09.15am – 1.30pm
(By Appointment Only)

(All year round)

Friday



With
Kamaljit

10.00am – 11:00am

BOOKINGS ONLY

Call
To Book
On
07522855528



Saturday



Sunday

Scan our QR
code for latest
timetable



Windmill Park Activities



Monday

Marvellous Michele Birth to 5 years

Hearing and joining in with familiar songs, rhymes and jingles can be a fun activity, which helps children to tune into rhythms and sounds of a language and hear its distinctive tune. Awareness of rhyme has been linked to progress in reading later on.

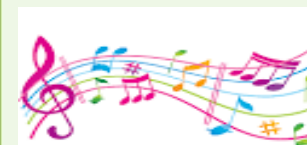


Wednesday

Stay & Play Birth to 5 years

Play and learn sessions where parents stay, have fun with their children and become involved with their children's learning.

As your child learns, has fun and makes new friends, you can get advice on such things as health, wellbeing and schooling as well as many other concerns you may have



Thursday

NHS Development Checks

If your child is aged between 8-12 months or 23-30 months, it is time to book a health and development check. It is your chance to find out about your child's development and speech and language. Find out about nutrition, toilet training, managing behaviour and immunisations. For booking please call NHS admin hub on 020 8102 5888



Wednesday Stay & Play

(Grove House Children's Centre)

Play and learn sessions where parents stay, have fun with their children and become involved with their children's learning.

As your child learns, has fun and makes new friends, you can get advice on such things as health, wellbeing and schooling as well as many other concerns you may have



Friday Talk & Play

"Talk and Play" is a five-week play-based group for under 3's run by Early Years Practitioners in Ealing, supported by Speech and Language Therapists. It provides families with strategies to support their child's language and communication development.

If you are on low income, call the Family Information Service on 020 8825 5588 to check to see if you are eligible for 15 hours per week of free childcare for 2 year olds. You will need your NI number or National Asylum Support Service number

You can access our latest timetable using below QR Code



Windmill Park Children's Centre, 1 Tulip Close. Southall Middlesex UB2 4UZ Tel: 020 8574 5310

See our website for more information www.ealingfamiliesdirectory.org.uk